

**Next-generation management platform designed to meet the needs of advanced enterprise networks**

## OVERVIEW

3Com® Intelligent Management Center (IMC) Enterprise Edition is the next-generation management platform, providing a self-contained, comprehensive management platform with the flexibility and scalability to meet the needs of advanced enterprise networks.

IMC Enterprise Edition is designed on a Service Oriented Architecture (SOA) using a business application flow model as the core, and boasting an on-demand, modularized structure. The combination enables the efficient implementation of end-to-end business management while IMC's modular design allows for the effective integration of traditionally separate management tools, providing complete management of resources, services and users.

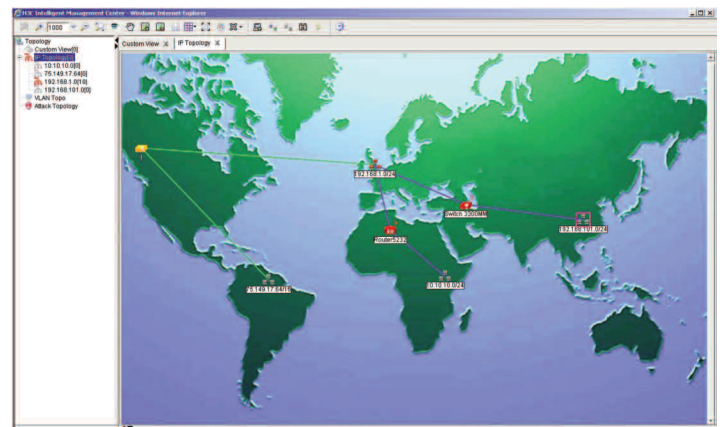
IMC Enterprise Edition is compatible with Windows Server 2003 and supports the management of 3Com, H3C™ and third-party devices.

IMC is licensed based on the number of devices requiring management. IMC Enterprise Edition supports up to 200 managed devices. Additional Node Licenses can be purchased to extend the node limit of IMC.

## KEY BENEFITS

### HIGHLY FLEXIBLE AND SCALABLE DEPLOYMENT MODELS

IMC Enterprise Edition delivers an extensive set of capabilities for managing large heterogeneous networks. The self-contained solution supplies scalability and high availability through a flexible distributed deployment model. With its modular design, IMC can be deployed across multiple servers, providing increased scalability and resilience.



3Com IMC: Topology Map

## KEY BENEFITS (CONTINUED)

### POWERFUL ADMINISTRATION CONTROL

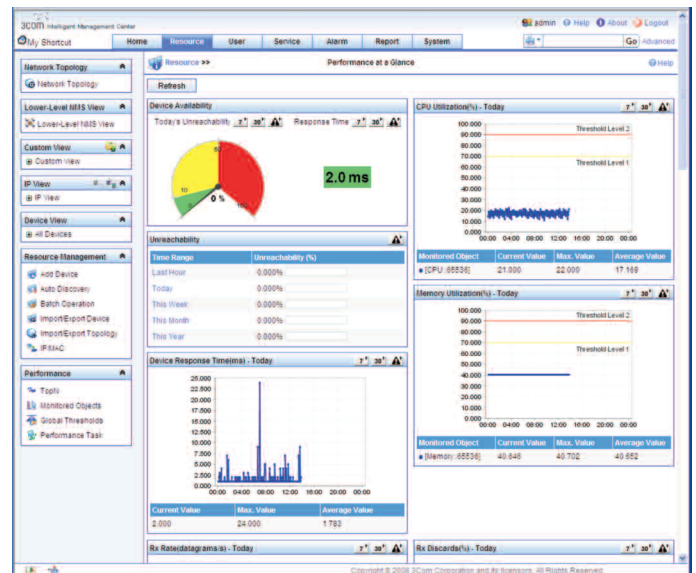
Multi-user, role-based management allows for the flexible administration and monitoring of an organization's network infrastructure. The System Administrator has control over which IMC users are allowed to manage devices and device groups, and can also restrict the operations that users can perform. The System Administrator also has access to full audit trails, which detail all network changes and identifies who made them. This helps ensure that the necessary processes and controls are in place to meet compliance.

### RICH RESOURCE MANAGEMENT

IMC provides powerful network discovery and topology, including a detailed inventory of the network and highly accurate depictions of how it is configured. Supported views include Layer 2 and Layer 3, as well as VLAN topology and custom view. Custom view allows the user to organize and control the network infrastructure based on any organizational model. IMC's integrated Device Management panel provides comprehensive element management for both 3Com and H3C devices.

### DETAILED PERFORMANCE MONITORING AND MANAGEMENT

IMC supports the complete fault-management process, providing in-depth correlation and analysis, real-time alarming, troubleshooting and experience capture. Easy-to-use performance monitoring detects bottlenecks and other network problems including those related to CPU, memory, and bandwidth utilization, devices response time and availability. TopN statistics allow the fast identification of the most loaded areas and devices on the network. A threshold can be set to generate alarms on any monitor, quickly alerting operators of any issues. To eliminate the possibility of an operator being flooded by alarms, IMC provides the option of setting customizable events as well as alarm and event filtering rules.



3Com IMC: Performance Monitor

### FLEXIBLE CENTRALIZED REPORTING

Centralized report management simplifies an organization's report administration. IMC's flexible historical reports provide information necessary for network trend analysis and capacity planning, offering pre-defined reports or allowing users to define the parameters of their own reports using Report Designer. Reports can be viewed in a number of formats including .pdf and .xls, and can be sent automatically via email, or scheduled to run regularly.

## KEY BENEFITS (CONTINUED)

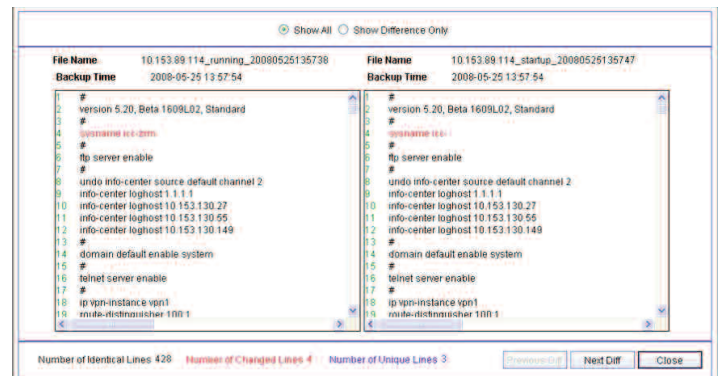
### SIMPLIFIED VLAN MANAGEMENT

IMC simplifies the deployment and management of VLANs across an organization's network infrastructure. This includes the ability to view the current VLAN topologies, and bulk deploy VLANs across the network.

### COMPREHENSIVE CONFIGURATION MANAGEMENT

The time required to roll out network changes and the likelihood of configuration errors are both greatly reduced with IMC's powerful Bulk Configuration functionality. Configuration baselining ensures that changes to the stable network configuration are flagged promptly.

The powerful Configuration Comparison feature provides the rapid identification of configuration differences, allowing the System Administrator to accept the new configuration or roll back to the original stable configuration. Additional functionality includes Bulk Backup and Restore, an extremely flexible agent management function that allows the System Administrator to have total control of the upgrade process.



3Com IMC: Configuration Comparison

### ACL MANAGEMENT

IMC simplifies the definition, deployment and control of ACLs with effective policy-based control of network security and QoS across an organization's network infrastructure. ACL rule optimization ensures efficient use of ACL resources on the devices.



3Com IMC: Display of ACL Management

### NETWORK TRAFFIC ANALYSIS

To allow greater visibility and control of network usage, IMC unlocks the power of data monitored by an organization's network infrastructure, including NetStream and SFlow data.

## SPECIFICATIONS

### WORKSTATION REQUIREMENTS

**Windows server:** 3.0 GHz processor, 2 GB memory, 80 GB hard disk, 100/1000 Ethernet NIC

Hardware requirements of IMC differ according to the components installed and the number of devices managed. Please refer to the IMC Installation Guide for full details.

### OPERATING SYSTEM REQUIREMENTS

Windows Server 2003 Service Pack 2

### DATABASES

An external database program is required with IMC. This is not included with IMC Enterprise Edition. Supported database program is Microsoft SQL Server 2005. For evaluation purposes only, Microsoft SQL Express is included. When IMC Enterprise Edition is deployed, Microsoft SQL Server 2005 must be used.

## ORDERING INFORMATION

### PRODUCT DESCRIPTION

3Com Intelligent Management Center Enterprise Edition v3.2  
(200-node license)

### 3COM SKU

3CR15800

3Com Intelligent Management Center Enterprise Edition v3.2 Software DVD 3CR15800SW

3Com Intelligent Management Center License for additional 100 nodes 3CR15800A

3Com Intelligent Management Center License for additional 500 nodes 3CR15800B

3Com Intelligent Management Center License for additional 1,000 nodes 3CR15800C

3Com Intelligent Management Center License for additional 5,000 nodes 3CR15800D

3Com Intelligent Management Center License for additional unlimited nodes 3CR15800E

#### Note:

- *Windows Server 2003 version of IMC Enterprise Edition v3.2 can be downloaded from [www.3com.com/IMC\\_Enterprise](http://www.3com.com/IMC_Enterprise). The downloaded Windows version will run for 60 days. To remove the time limit, the user must register IMC Enterprise Edition v3.2 using a license key. To purchase a license key, order SKU 3CR15800.*
- *3Com Intelligent Management Center Enterprise Edition v3.2 Software DVD contains the Windows Server 2003 version of IMC Enterprise Edition v3.2. The DVD does not include a license key. To purchase a license key, order SKU 3CR15800.*
- *Microsoft SQL Express is included on the DVD and as part of the download for evaluation purposes only. When IMC Enterprise is deployed, the user must install Microsoft SQL Server 2005.*

Visit [www.3com.com](http://www.3com.com) for more information about 3Com secure converged network solutions.

3Com Corporation, Corporate Headquarters, 350 Campus Drive, Marlborough, MA 01752-3064  
3Com is publicly traded on NASDAQ under the symbol COMS.

Copyright © 2008 3Com Corporation. All rights reserved. 3Com and the 3Com logo are registered trademarks, and H3C is a trademark, of 3Com Corporation in various countries worldwide. All other company and product names may be trademarks of their respective companies. While every effort is made to ensure the information given is accurate, 3Com does not accept liability for any errors or mistakes which may arise. All specifications are subject to change without notice. 401104-001 08/08

